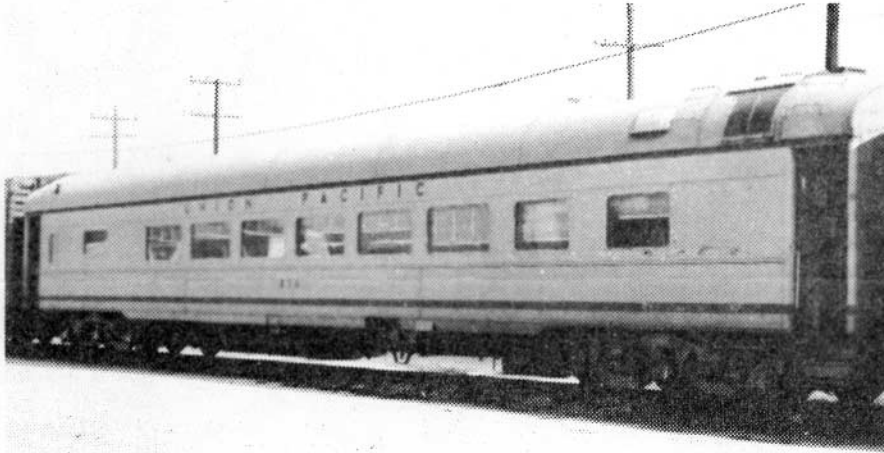


An Historic Event!

A
PSRMA
ACTIVITY

RIDE CAR 576 ON DAY OF DELIVERY
ROUND TRIP EXCURSION - LOS ANGELES AND RETURN
SATURDAY, JULY 12, 1969



Union Pacific Railroad Coach No. 576, a modernized heavyweight car, has been purchased by the Pacific Southwest Railway Museum Association, Inc. for immediate use as an excursion car and for eventual use on the Museum's own railroad. Car 576 will be delivered to the Association on Saturday, July 12, at the Los Angeles Union Passenger Depot. To commemorate the event, PSRMA plans an acceptance ceremony and a round trip excursion, with the return trip on Car 576. Members and friends are invited. Here's the schedule:

Leave San Diego at 7 a.m., Saturday, July 12, on a reserved car on Train No. 73.
Arrival in Los Angeles at 9:55 a.m. will be followed by the acceptance ceremony.

We'll leave Los Angeles at 11 a.m. on Train 76 and we'll ride in our own private car - Coach 576. Return to San Diego will be at 1:55 p.m.

Tickets must be purchased through PSRMA. We expect to sell all of the car's 44 seats. A limited mailing will also be made to non-members. Round trip fare is \$10. Do order your tickets now! First come first served. A box lunch consisting of two sandwiches, a piece of pie and a carton of milk may be ordered for \$1.45

PSRMA is coming alive! We have the equipment and we may be signing a contract shortly for a quarter of a mile right-of-way. Step by step, the Museum is taking shape. You can help. Join us on this excursion. Send in or bring a contribution and have your name included on the 576 sponsor list which will be posted permanently in the car. Will you help? "Own" a share of Car 576!