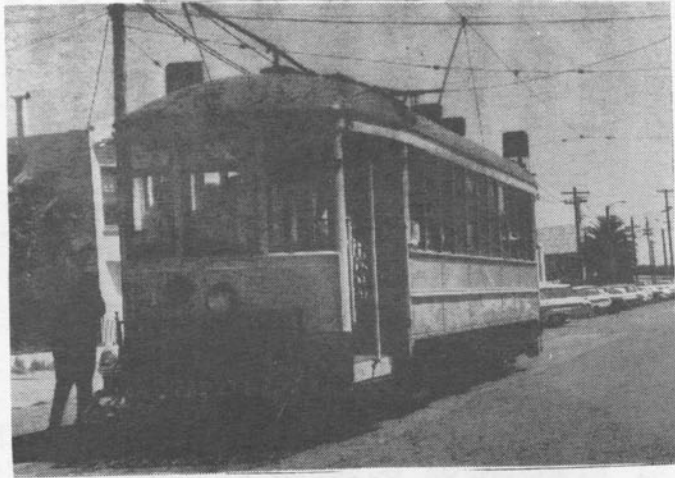
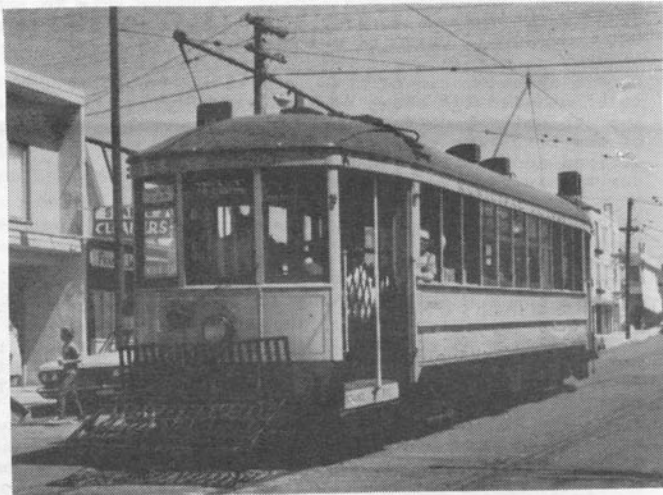


Car #1 at the end of the "M" line



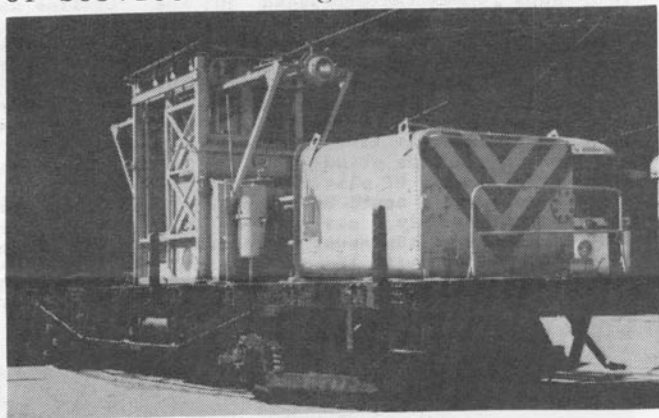
Car #1 on turnback at end of "M" line



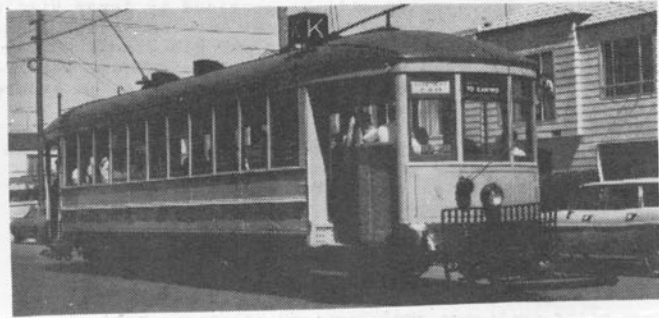
At end of Taraval St. on normally out-of service trackage covered on tour



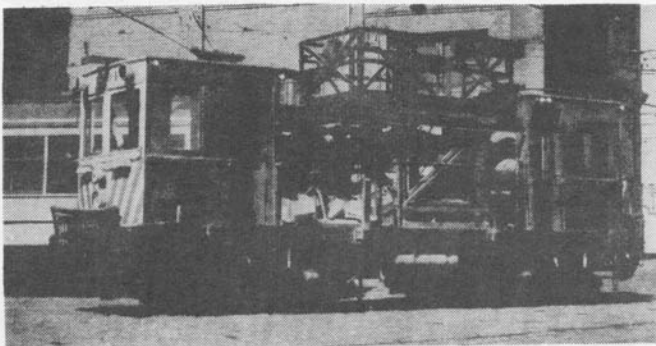
#1 westbound on "L" line just west of Twin Peaks Tunnel on Ulolia St.



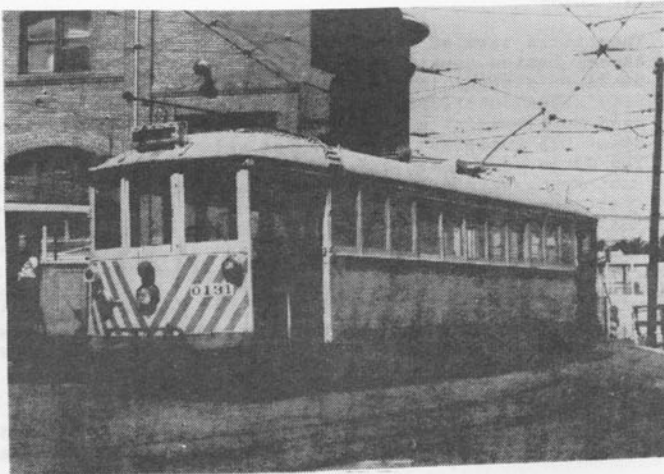
Tower Car #0304 at Geneva Car Barns



South end of "L" line at loop portion



Work Car C1 just outside Car Barns



Wrecker #0131 sitting in Geneva yards