



REPORT

ISSUE 86

SAN DIEGO, CALIFORNIA

APRIL, 1972

LAND SEARCH TAKES PSRMA FIRST PRIORITY AS OTHER PROJECTS SLOW DOWN IN EMERGENCY

A special Ad Hoc Committee formed by the Board of Directors at its March 7th meeting has begun an extensive search for a permanent site for PSRMA's Museum. The formation of the Committee came **after** a list of recommendations was presented by Land Committee Chairman Dave Parkinson to the Board.

In addition to the formation of the Ad Hoc Committee, open to all members with the Board acting as the nucleus, Parkinson also recommended the cessation of all activities not directly related to Museum acquisition and development with the exception of emergency storage transfers and fund-raising excursions. He also called for a moratorium on all equipment acquisitions requiring any significant Association funds or manpower until the crisis is over and land is obtained.

The Board agreed to accept Parkinson's recommendations in general, and the first meeting of the Ad Hoc Committee was held on March 21st in the House of Charm. Following a special mailing to all members announcing the meeting place and time, a total of 16 members attended. Committee Chairman H. C. Kerr, Jr. (PSRMA President) and Vice-Chairman Parkinson outlined the extremely critical situation facing PSRMA which led to the formation of the committee and the other resolutions in regard to land acquisition adopted by the Board March 7th.

The continued growth of PSRMA's historic collection of railroad equipment and memorabilia has filled just nearly every 'temporary' storage site in San Diego County. Museum equipment is spread from the military bases of Miramar Naval Air Station and the Marine Corps Recruit Depot to the private homes of members to the Orange Empire Trolley Museum located
(continued on top of next column)

in Riverside County. Much of this storage area is on a short term interval, and the cancellation of any storage site would be a major emergency for PSRMA.

Another factor involved with the equipment sites currently being used is the lack of operating activities offered to Association members and the general public. And although PSRMA does now have an enviable collection, the Association has yet to achieve its basic goal: an operating rail museum.

These are the major problems that faced the Ad Hoc Committee at its first meeting March 21st.

In the discussion that followed the opening remarks presented at that meeting, the alternatives and possible sites were thoroughly inspected. By consensus the Committee narrowed down to four locations the **feasible sites** that could be obtainable taking into all consideration cost, location, rail access, etc.

Each land proposal was assigned to an individual team of members to thoroughly investigate. A second meeting of the Ad Hoc Committee will be held April 18th at 7:30 in the evening, again in the House of Charm. Each of the sub-committees will report on its findings as to the feasibility of each proposed Museum site. If one site appears to be within the necessary requirements, Board action will be taken.

The individual sites cannot be given publicly, nor here in print, as all are still in the first areas of negotiation. The four sites are in widely diverging localities and offer differing forms of potential Museum development.

If you are interested in more details, or want to help PSRMA achieve its original and most important goal, you will have to attend the Ad Hoc Committee meetings. This is the crossroads for PSRMA. If a permanent site cannot be found now, all may be lost.

1971 MEMBERSHIPS EXPIRE APRIL 15

As the first quarter of the year is coming to a close, we'd like to remind those of you who have not renewed that your 1971 membership will expire on April 15th. In other words, this is your last reminder as, unless you renew for 1972, this issue will be your last REPORT.

PSRMA is in a critical situation. The need for a permanent Museum, just to handle the vast PSRMA collection, is crucial. But just as important is the continued expansion of our membership. In the past few years this growth in members has been the most heartening development in our history. The Association needs your continued support.

An Application-Renewal Form was enclosed with the last issue of REPORT. If you did not get one, or have lost yours, let John Hathaway, Director of Records & Personnel, know. His address is 4215 Dwight Street, San Diego, California, 92105.

Enclose your check or money order (\$10.00 for Regular members, \$3.00 for Contributing members) with your filled out form and send both to John.

An additional request...please take the few moments necessary to completely fill out the form. If you want to actively participate, check the areas that apply to interests and abilities. If you can't join in actively, at least indicate where your interests lie. This information is very important to our officers and staff members, and a tabulation of all replies is included on each membership roster prepared for PSRMA.

And a final couple of requests... make the check or money order out to PSRMA, Inc., and include your zip code. The latter is necessary for all of our bulk mailings such as REPORT and special excursion notices.

As mentioned elsewhere, each member will shortly be receiving a listing of all major items within the Museum collection and a complete set of the Association by-laws in addition to his membership card. We hope this will help all members become a little more familiar with their Association, and maybe even encourage them to try and recruit friends and relatives to join in. We do need your continued support.

PSRMA OFFICERS AND STAFF

BOARD OF DIRECTORS

CHAIRMAN OF THE BOARD; GENERAL SUPER.

Dick Pennick 463-2276

PRESIDENT

H. Chalmers Kerr, Jr. 291-4787

VICE-PRESIDENT - GENERAL MANAGER

George Mazzara 273-1331

TREASURER

Dave Hobson

SECRETARY

John Hathaway 283-5195

MEMBER, BOARD OF DIR.; EXCUR. CHRMN.

B. V. Parks 463-5129

MEMBER, BOARD OF DIR.

Wally Barber 466-3192

MEMBER, BOARD OF DIR.; ACQUISITIONS DIR.

Terry Durkin 298-6205

DEPARTMENT HEADS

LAND COMMITTEE

Dave Parkinson 488-3673

TRACTION COMMITTEE

Tom Matson 273-8951

WAYS & MEANS CHAIRMAN

Vacant!

PUBLIC RELATIONS DIRECTOR

Vacant!

CALENDAR FOR APRIL/MAY

APRIL 15 - Steamup on Ollie Johnston's Deer Lake Park & Julian Railroad, 10 a.m. until...? Fares: adults \$1.50, children under twelve \$.50. Only 40 can go; on a first come, first served basis. Contact Cathie Parks for more information and tickets, 583-8397.

APRIL 28-30 - Two-night, one-day private Pullman excursion to Benjamin Hill, Mexico. Only one upper berth left. Contact B. V. Parks, 463-5129, for more information on this or other excursions.

MAY 2 - Monthly Board of Directors' meeting. Trust Room of downtown office of San Diego Trust & Savings Bank, Sixth and Broadway. Enter through building entrance off Broadway. The Board meets the first Tuesday of each month here at 7:30 in the evening. All members are welcomed, and encouraged, to attend these policy making sessions of PSRMA.

MAY 5 - General Meeting, see article.

GENERAL MEETING MOVED TO MAY

Because of a conflict of dates with the Benjamin Hill excursion, the Spring PSRMA General Meeting will be held in May this time around instead of April.

The date is Friday, May 5th, and again the meeting will be held in the La Sala Room of Balboa Park's House of Hospitality on Laural Street.

The meeting, which begins at 7:30 in the evening, will offer members up-to-date information of Museum programs and the latest progress in the land acquisition drive now under way. Also on the slate will be a fine program of interesting entertainment, as well as the usual opportunity to meet fellow members.

Family members are encouraged to attend, and a fine time should be had by all...that's Friday, May 5th, at 7:30 in the La Sala Room of the House of Hospitality. Mark the time and place on your calendar. See you there.

JULIAN STEAM TRIP SET FOR PSRMA MEMBERS

The Deer Lake Park & Julian Railroad will be open to members of PSRMA on Saturday, April 15th. The DLP&J RR is owned and operated by Mr. & Mrs. Ollie Johnston on the outskirts of Julian in the Cuyamaca Mountains east of San Diego.

The Johnstons have generously offered the visit to PSRMA, with money raised from the modest fare to go into the PSRMA land development fund.

All members have been sent a special brochure with further information. Fares are \$1.50 for adults and \$.50 for children under twelve. Tickets can be obtained from Miss Cathie Parks, and at this late date it might be best to call her at home. Her number is 583-8397.

The DLP&J RR is a full scale, narrow gauge steam powered line personally built by the Johnstons and a number of friends. The small ex-Hawaiian plantation locomotive and home-built cars meander through the scenic pine forests surrounding the Johnstons' summer cabin.

There is room for only 40 people, so if you want to see this unique, and little known, steam train operation, give Cathie a call right away. And it's a fun way to help support PSRMA!

BENJAMIN HILL EXCURSION SOLD OUT...ALMOST

The two-night, one-day Pullman excursion to Benjamin Hill is sold out.... almost. Tour Director B. V. Parks reported on April 4th that all space on the Mexican Pullman leased by PSRMA have been sold with the exception of one upper berth. B. V. also added Jack Stodelle's private car #1531, already located in Mexicali, will not be used for the trip due to a lack of patronage.

The PSRMA Pullman will leave Mexicali Friday night, April 28th, with the regular Sonora-Baja California night trip across the Altar Desert. The car will be cut off in Benjamin Hill early the next morning to allow patrons to spend the entire day exploring this unique Mexican rail facility. The car will return to Mexicali that night in regular train service.

It is a fascinating experience for the American railfan to tour the Mexican railroads. The National railroads, especially passenger operations, are still the backbone of that country. Rare, vintage equipment is still in use, juxtaposed with modern rolling stock, allowing the railfan plenty of opportunity to watch the old and new working side by side.

Officials and employees of the Mexican railroads are aware of the importance of their service, and show a pride in their work sadly often lacking in rail operations north of the border. They are usually more than happy to cooperate with the interested railfan in showing off their operations. It is, indeed, a rare opportunity for those of us north of the border to tour Benjamin Hill.

If you are interested in that last upper berth, and it may be gone by now, hurry and give B. V. a call at 463-5129. It may be too late this time, but if enough interest is shown, perhaps the trip will be run again.

Also, B. V. is the one to contact if you are interested in helping out on excursions in the future, or if you have new ideas for different excursions that PSRMA can handle. As in the past, these excursions will probably continue to be our main source of revenue. Continued support from the members in their organization and operation is necessary to keep up these past successes.

MEMBERSHIP INFORMATION PACKET DELAYS 1972
RENEWAL PROCEDURES

Your patience is appreciated by the Membership and Records Department with the slowness in response to 1972 renewals and new memberships. Starting this year all members will receive, in addition to the membership card, a copy of the PSRMA by-laws and a complete listing of all Association equipment.

The preparation of these materials, along with the usual flurry of renewal activity, has slowed down the wheels of progress considerably.

THE SUPERINTENDENT'S REPORT

Most operations activity of late has been involved with projects previously committed for or storage emergencies that continue to crop up.

LAKE MORENA STREETCARS - The May 1st deadline on the Lake Morena streetcars is near at hand and a small group of dedicated members continue to work on the preservation of at least two of the historic ex-San Diego Electric Railway bodies. Stripping of the cars to be scrapped continues, and the Museum's bodies will soon be prepared to move to a temporary storage site. The May 1st deadline, and the fact PSRMA has no traction equipment in its collection, make this a very important project. Help is needed for these regular work parties, and the person to contact is Dick Pennick at 463-2276.

(continued on top of next column)

PSRMA Report
P.O. Box 12096
San Diego
California 92112

DIGIORGIO STORAGE SITE - A change in plans has necessitated the removal of all Museum equipment and materials stored on the property of Bob DiGiorgio. On Sunday, February 27th, and again Saturday, March 4th, Museum crews, with the aid of member Bill Newland's trailers and equipment, completed almost all removal with the exception of the line truck and a few other minor items. Bill is a construction contractor, and without his help and equipment the job could not have been done.

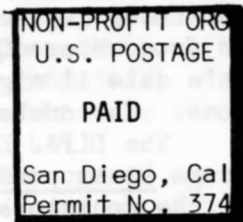
COUNTY STORAGE SITE - A formal request has been made to the county for storage at its Valley Center Maintenance station. Earlier contacts indicated such an arrangement could be made.

The site is fenced and lighted, and if made available would easily take the streetcar bodies from Lake Morena and the materials that had to be removed from the DiGiorgio property.

RAILBUS - The railbus continues to improve each week under the leadership of foreman Dan McLean. Two or three people are often hard at it each weekend. The railbus is currently stored at the General Superintendent's home in Spring Valley following removal from DiGiorgio's.

LINE TRUCK - Most of the line truck is now painted for weatherproofing according to foreman Tom Matson. This should preserve it until an earnest rejuvenation, and repair, project can get under way.

PROBLEMS - In spite of excellent cooperation from Miramar security, the Shay was broken into recently. Apparently the culprits were a number of kids as there was no theft and only minor vandalism.



Return Postage Guaranteed

Address Correction Requested